

158th Byfleet

Saturday 19th July 2025 - 12.30 to 5.00pm



**DOG
SHOW**



**CLASSIC
VEHICLES**



SATURDAY 19TH JULY 2025

**BYFLEET RECREATION GROUND
FROM 12.30**



FUN FOR ALL THE FAMILY

For more information on all the latest news visit
www.byleetparishday.info



FREE PARKING IN RECREATION GROUND, RECTORY LANE ENTRANCE

**HORTICULTURE
SHOW**



Parish Day 2025

MAIN SPONSORS OF BYFLEET PARISH DAY

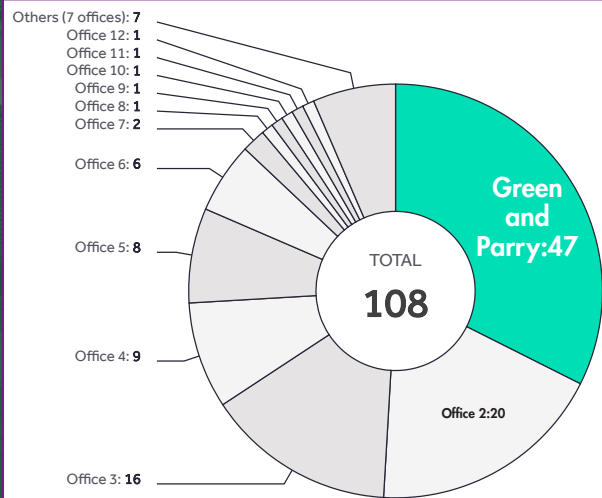
rightmove 
find your happy

SALES & LETTINGS

The information below is based on the following filters:

Beds: up to 999 bedrooms | Date: 06/01/2024 - 03/12/2024

**THE
MOST SUCCESSFUL
ESTATE AGENT IN
KT14 7**



1st

out of
22 offices

Green and Parry

Byfleet

97 High Road Byfleet

Telephone: 01932 351986

info@greenandparry.com

www.greenandparry.com

Insights brought to you by Rightmove

Data is derived purely from Rightmove.co.uk's internal statistics and advertisers on 04/12/2024, may be subject to specific geography or search criteria and is provided 'as is' for general interest only. Rightmove makes no warranty as to the data's suitability for any purpose and accepts no liability for any action or inaction taken as a consequence of its use. For a full list of all competing agents contact: marketing@rightmove.co.uk

WELCOME TO BYFLEET PARISH DAY

OPENED BY THE MAYOR OF WOKING AMANDA BOOTE

ACCOMPANIED BY THE PARISH DAY KING, QUEEN, PRINCE AND PRINCESS

This year we are celebrating our 158th Byfleet Parish Day

We start with a procession leaving St Mary's Church Hall at 12.20 led by Horse & Carriage carrying the Mayor & the Parish Day Royal Family. There will be various vehicles in the parade which will go down Church Road, Brewery Lane, High Road and Rectory Lane before reaching the Recreation Ground. The Horse and Carriage are kindly sponsored by The Byfleet, West Byfleet and Pyrford Residents Association.

We have arranged nearly **100 stalls, Events, Displays, Rides and Games** so there will be lots to do on a great afternoon. There will be plenty to eat and drink at the Food Stalls with a **Hog Roast, Burgers & Sausages, Fish & Chips** as well as the **Real Ale & Cocktail Bars, Beer Tent** with **Soft Drinks** and of course **Ice Cream**.

Join us for Live Music from our covers band **Goldsworth Gerry**, the **Surrey Pipe Band** and the **West Byfleet Show Choir**. Arena events including the **Misselchalke Gundog Display** and the **Susan Robinson School of Ballet, Silvermere Gymnastics and Julie Sianne Theatre Arts**.

Meet **Matto the clown** and **Bonnie the Stilt Walker**, watch the popular **Punch and Judy Show** and the **Children's Races**, visit the **Dog Show** and the **Classic Vehicle Show**.

In the Village Hall the **Horticultural Show** will be taking place with a fantastic array of prize-winning exhibits along with the **Homecraft & Handicraft** display.

All attractions and stalls are subject to change but are correct at time of print.

Please listen to announcements on the day.

We would like to thank our main sponsors this year West Hall and Green and Parry. A big thank you to Amazon for their support and enthusiasm for community events.

Esther Watson Green- Chairman, and all the committee members of the
Friends of Byfleet Parish Day



Mayor of Woking
AMANDA BOOTE

**ENTRY ONLY
£2
£1 FOR
CONCESSIONS**

RECREATION GROUND ★ RECTORY LANE ★ BYFLEET KT14 7LZ

2025 BYFLEET PARISH DAY ROYAL FAMILY



KING
JACK HAWKEY



QUEEN
ADA BAKER



PRINCESS
AMBER NAISMITH



PRINCE
MANOLIS MINAS

THINKING OF MOVING?

UNLOCK THE POTENTIAL
OF YOUR PROPERTY WITH
A FREE VALUATION

TO BOOK CALL: 01932 336114

hodders



SALES | LETTINGS | NEW HOMES

hodders.net

FUNERAL DIRECTORS & MEMORIAL STONEMASONS



Robert, Chris & Andrew Lodge

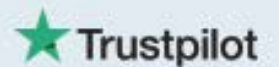
OUR FAMILY HELPING YOUR FAMILY

For over 240 years, seven generations of the Lodge Family have been privileged to help local families in their time of need. We provide all funerals, whether modern, traditional, green or alternative, with care and compassion.

BYFLEET (Lodge & Boutell)
Amptwade House 50 High Road, KT14 7QL
01932 345037

WEST BYFLEET
33 Old Woking Road, KT14 6LG
01932 355897

www.lodgebrothers.co.uk



"An excellent service providing a compassionate funeral for our father. Lodge Brothers exceeded our expectations and demonstrated a depth of care that one would show to their own family."



5.0 Excellent as of 03/25

- J. Luxton

Lodge
BROTHERS 1790
the family you can turn to



ASK ABOUT OUR
PRE-PAYMENT
FUNERAL PLANS

FLORAL TRIBUTES • FUNERAL PLANS • WILLS & PROBATE

Schedule of Classes

2.00pm - Best Puppy

2.15pm - Most Handsome Dog

2.30pm - Prettiest Bitch

2.45pm - Best Rescue

3.00pm - Golden Oldie (over seven years)

3.15pm - Dog with the Waggiest Tail

3.45pm - Most Mischievous Mutt

4.00pm - Dog the Judge would like to take home

4.30pm - BEST IN SHOW (for the class winners)



Companion Dog Show

C & E ELECTRICAL WHOLESALE

CALL US

1-2 VANNERS PARADE, HIGH ROAD,
BYFLEET KT14 7RA

Tel: 01932 354525

Email: candebyleft@btconnect.com

THE OLD FORGE, KINGFIELD ROAD,
WOKING, SURREY, GU22 9EG

Tel: 01483 757878

Email: candewoking@btconnect.com

DON'T PAY D.I.Y. PRICES

• **Public Welcome** • **Friendly & helpful Staff**

Opening hours: Monday - Friday 7am to 5.30pm

Saturday 8am to 1pm



SQUIRES

GARDEN CENTRES

A family business since 1936



85% of our plants are sourced from UK nurseries

Quality plants, gardening products, BBQs, garden furniture and gifts.

Our Café Bar serves breakfast, lunch and afternoon tea.

Your local Squire's;

Burwood Road, Hersham, KT12 4AR

Stoke Road, Cobham KT11 3PU

Littlewick Road, Woking, GU21 4XR

squiresgardencentres.co.uk

£5 Off

When you spend £35 or more on plants

SQUIRES

GARDEN CENTRES

Exclusive voucher valid until 31 July 2025

Redeemable in-store only. One voucher per transaction and per customer. Not valid in conjunction with any offer or voucher. Only original vouchers accepted. Visit squiresgardencentres.co.uk for full T&Cs & privacy policy.



BROOKLANDS MUSEUM EVENTS 2025



WED 01 JAN	NEW YEAR'S DAY CLASSIC GATHERING	SUN 22 JUN	LONDON BUS MUSEUM SUMMER FESTIVAL
SUN 26 JAN	VSCC DRIVING TESTS	SUN 29 JUN	PORSCHE DAY <i>with Porsche Club GB</i>
SUN 23 MAR	MINI DAY	SUN 06 JUL	MOTORCYCLE DAY
SUN 06 APR	VETERAN & VINTAGE MOTORCYCLE DAY	SAT 19 JUL	WORKING VEHICLES DAY
SUN 13 APR	LONDON BUS MUSEUM SPRING GATHERING	SUN 27 JUL	SUMMER CLASSIC GATHERING & AUTOJUMBLE
SAT 19 APR	EASTER CLASSIC GATHERING	SUN 10 AUG	LAGONDA FÊTE
SAT 26 APR	MUSTANGS SUPERCHARGED <i>with Surrey Mustang Owners Club</i>	SAT 16 AUG	SILVER SHADOW 60 TH ANNIVERSARY <i>with Rolls Royce Enthusiasts' Club</i>
SUN 27 APR	DRIVE IT DAY	SUN 31 AUG	AMERICAN DAY
SAT 03 MAY	ITALIAN CAR DAY	SUN 07 SEP	JAPANESE DAY
SAT 17 MAY	MOTOR PROUD <i>with Racing Pride</i>	SAT 20 SEP	EMERGENCY SERVICES DAY
SUN 25 MAY	MOPAR MUSCLE	SUN 28 SEP	GERMAN DAY
MON 26 MAY	BEST OF BRITISH	SUN 12 OCT	MOTORSPORT DAY
SAT-SUN 14-15 JUN	BROOKLANDS RELIVED - FESTIVAL OF MOTORSPORT	SUN 19 OCT	LONDON BUS MUSEUM TRANSPORTFEST
		SUN 02 NOV	OFF ROAD DAY

PLUS FLY INS, CAR CLUB MEETS, TALKS AND MORE

BROOKLANDSMUSEUM.COM/WHATS-ON

BYFLEET, WEST BYFLEET AND PYRFORD RESIDENTS' ASSOCIATION JOIN US!



The Byfleet, West Byfleet & Pyrford Residents' Association (the 'RA') is run by volunteers and has been supporting local residents for more than 90 years.

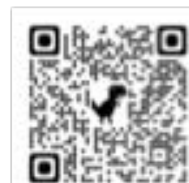
What We Do

- Planning Issues: review and comment on planning applications.
- Lobbying and working with your local councillors and MP to address neighbourhood issues.
- Support and donate to local charities, community groups and events such as Christmas Lights: Byfleet, West Byfleet and Pyrford, Village Shows.
- Health and Wellbeing: Help patients navigate and provide guidance on access to West Byfleet Health Centre and local NHS services.
- Work with, and actively support, the Neighbourhood Forums.
- Plus much more!

Our website - at **www.the-residents.org** has more information about the association.

It's easy to join:

- Membership is £8 annually which includes three newsletters per year
- Send your name and address details to members@the-residents.org, or
- Use the "Join Us" form on our website at **www.the-residents.org**, or
- Scan the QR code below



The Queens Head

Family Run Pub

A friendly local pub in Byfleet village. Serving quality fresh food daily

Friendly & Welcoming

A traditional family run pub we strive to make everyone feel welcome. With a play area for the children, TV's for sports fans and tables for dining.



Food & Drink

We have a fantastic selection of food and drink available to suit everyone. From a simple lunch or evening meal to a social gathering we will do our best to make sure you enjoy your visit.

Everyone is welcome, bring your children and the family dog, relax and let us take care of you.

The Queens Head, 2 High Rd, Byfleet, West Byfleet KT14 7QG

This year at Parish Day we would like to welcome Watch Commander Neil Cook and his team from Painshill Fire Station.

Painshill Fire Station is the animal rescue station for Surrey, also water rescue, heavy rescue and has an Incident Command Unit for large incidents.

They carry out Safe and Well Visits, where they come in to your home, by appointment, and offer all sorts of fire safety advice and well as fit smoke detection devices free of charge, these devices have a 10 year life battery so there is no need to change batteries periodically, this service is offered to all Surrey residents. They will then liaise with fire service HQ who will then pass your details on to the nearest fire station and they will contact you within a 14 day period.

They will be offering this service to the residents of Surrey who visit Parish Day.

Neil and his team will be fully operational on Parish Day and will have to leave to attend any incidents if necessary.



S21P1 fire engine from Painshill responding



A.PUGH Heating Ltd

All aspects of heating and gas works undertaken

- Boiler servicing
- Boiler repair
- Boiler replacement
- Gas cooker installation
- Powerflushing
- General plumbing
- Gas safe registered

20 + years experience



Tel: 07960 959 846

Email: apughheating@gmail.com

SKYLINE ROOFING

- new roofs
- roof repairs
- flat roofs
- ridge tiles
- roof coatings
- insulation
- fascias and soffits
- dry verges
- cladding
- repointing
- guttering
- drone roof surveys

Contact us for a free quote
07426 232566

PB home improvements

Property maintenance handy man services

Drainage/plumbing/bathrooms/kitchens/
flooring/painting/decorating/roofing/brickwork/
driveways/landscaping/guttering/fencing/pvc clean or
replace/flat packing

We cover all home improvements
and property maintenance work
friendly reliable service

please call 07493728574 for a free quote
email: pbhomeimprovements574@hotmail.com

Feel Your Best with Vernetta

Yoga, Pilates, Zumba Dance Classes

IN PERSON

Mon 10am - BYFLEET - **Hatha Flow Yoga** (moderate)
Mon 7pm - WEYBRIDGE - **Hatha Flow Yoga** (moderate)
Tues 1.30pm - HERSHAM - **Zumba Gold** (low intensity, moderate speed)
Wed 10am - THORPE - **Core Flow Yoga** (moderate-strong)
Wed 7pm - WEYBRIDGE - **Zumba Dance Fitness**

LIVE ONLINE ON ZOOM

Tues 7pm - **Hatha Flow Yoga** (moderate)
Wed 10am - **Core Flow Yoga** (moderate-strong)
Wed 12.30pm - **Chair Yoga** (Slow / Gentle)
Thurs 7pm - **Yin Yoga** (Restorative / gentle)
Sat 12pm - **Fusion Yogalates** (Yoga & Pilates, gentle-moderate)

Holistic Treatments

Reiki, Massage, Emotional Freedom Technique (EFT), Menopause Coaching

PREBOOKING ESSENTIAL FOR CLASSES www.vernyoga.com vernyoga@yahoo.co.uk

- New to exercise?
- Prefer online or in-person?
- Need something gentle or prefer something a bit more dynamic?
- Want to work on strength, mobility & flexibility?
- A wide variety of classes & sessions, so you can hopefully find something right for you.
- Highly qualified & insured yoga therapist & fitness instructor with 20 years teaching experience.
- Specialising in 1-2-1 tailored yoga therapy programmes for back care, anxiety & menopause



THE PLOUGH



BYFLEET



HIGH ROAD | BYFLEET | KT14 7QT

01932 354895

Find us on the Village Green

TRADITIONAL PUB
WITH A CHOICE OF
CAMRA & GUEST ALES
SERVED ALL DAY, EVERY DAY



Family friendly
beer garden

Charity Quiz
every second
Tuesday of the month

Live bands!
Welcoming atmosphere

Byfleet Village Neighbourhood Plan

2022-2027

Get Involved



The Plan's purpose

- To protect our village from inappropriate development
- To ensure that new developments meet design criteria
- To protect our open green spaces
- To enhance our community assets
- To ensure that our village infrastructure is sustainable
- To protect our conservation area and buildings of architectural interest
- To promote a vibrant commercial centre to sustain employment.

Electronic copies are also available on the Byfleet Residents' Neighbourhood Forum Website <https://www.byfleetforum.co.uk> and the Woking Borough Council Website <https://www.woking.gov.uk>.

For any enquiries, please email administrator@byfleetforum.co.uk.

Vouchedfor

★★★★★281 Five-Star Google Reviews★★★★★

Residential Mortgages Buy - To - Let Mortgages Life Insurance



Rachel Lummis**Carmen Green**

01932 350 641
info@xpressmortgages.co.uk
www.xpressmortgages.co.uk





Step into a Hidden Gem
in the Heart of Byfleet Village.

With years of experience, a loyal Byfleet clientele, over 400 5-star reviews, and shortlisted for three Hair & Beauty Awards 2025 representing Surrey!!

Offering:

- Beautiful hair
- Luxurious facial treatments
- The ultimate scalp experience - The Head Spa

New clients are welcome!

Contact Megan to make your booking and come relax at the private sanctuary Megan has created.



salonmegans@gmail.com
www.salonmegans.com
Byfleet Village
@salonmegans

West Hall

WEST BYFLEET | SURREY



We're welcoming new residents for tailored dementia care

We're proud to provide dementia care tailored to each individual residing at West Hall. We're here to help and answer any questions you may have.

West Hall offers:

- First class care environment
- Landscaped gardens
- Café area
- Hair and Beauty salon
- Library
- Activity areas

For more information, please contact a member of our friendly team on **01932 911 339** or visit **www.WestHall.org.uk**

West Hall care home, Off Parvis Road,
West Byfleet, Surrey, KT14 6EY



ROWBOAT HIRE

FUN, FITNESS, FRESH AIR, NATURE AND WILDLIFE!

OUR EIGHT STABLE ROWING BOATS AND TWO PEDALOS PROVIDE FUN FOR ALL AGES AND ABILITIES. THE BOATHOUSE IS CENTRALLY LOCATED ON THE LONGEST UNBROKEN STRETCH OF THE WEY NAVIGATION, PROVIDING A CHOICE OF ROUTES AS FAR AS PYRFORD LOCK, NEW HAW LOCK AND LOCK 1 AT WOODHAM ON THE BASINGSTOKE CANAL.

BUOYANCY AIDS ARE AVAILABLE FOR ALL AGES ON REQUEST

BYFLEET BOAT CLUB, THE BOATHOUSE, OLD PARVIS ROAD, WEST BYFLEET, KT14 6LE. 01932 340828

BYFLEET RECREATION GROUND

RECTORY LANE * BYFLEET * KT14 7LZ

FREE PARKING



PARISH DAY SITE LAYOUT

158th Byfleet Parish Day 2025

MAIN ARENA EVENTS

- 12 noon Gates open to the recreation Ground
- 12.20pm Led by a Horse & Carriage the Parade leaves St Mary's Church Hall in Church Road, with the Mayor of Woking and our own Parish Day 'Royal Family'
- 12.35pm The Surrey Pipe Band joins the Parade at Plough Green
- 12.50pm Proceedings commence with the arrival of the Parade
- 1.00pm Official opening and announcements by Andrew our MC
- 1.10pm Susan Robinson School of Ballet
- 1.30pm Misselchalke Gundog display
- 2.15pm Silvermere Gymnastics
- 2.30pm Julie Sianne Theare Arts
- 2.50pm Misselchalke Gundog display
- 3.30pm Children's races
- 4.00pm Tug of War
- 4.30pm Best in show + Raffle and Prizes

MUSIC IN THE FOOD AND DRINK AREA

- 1.15 – 2.00pm Goldsworth Gerry
- 2.00 – 2.15pm Surrey Pipe Band
- 2.15 – 3.00pm Goldsworth Gerry
- 3.15 – 3.45pm West Byfleet Show Choir
- 4.00 – 4.45pm Goldsworth Gerry

DID YOU KNOW THAT ALL THE BARS AT PARISH DAY ARE RUN BY THE PARISH DAY COMMITTEE? ALL PROFITS GO BACK INTO PARISH DAY, SO WHY NOT HAVE A DRINK AND SUPPORT THE SHOW! WITH THE BEER TENT, REAL ALE AND COCKTAIL BARS THERE IS SOMETHING FOR EVERYONE



ALL TIMES ARE APPROXIMATE AND SUBJECT TO CHANGE. NOTICES AND ANNOUNCEMENTS WILL BE MADE DURING THE DAY

THANK YOU

WE WOULD LIKE TO THANK EVERYBODY WHO HAS SUPPORTED THE 158th PARISH DAY

Our main sponsors this year are:

WEST HALL, GREEN & PARRY AND AMAZON

The following people or organisations have given help in some way.

James & Tim at Binfield Print & Design, The St John Ambulance, Bob Holmes for his photographs, Steve Davies for his continued support and preparation of Parish Day accounts, Lynn & Holly Cozens for looking after the 'Royal Family'. Our MC Andrew Weiss Byfleet, West Byfleet and Pyrford Residents Association for their sponsorship of the Royal Family Horse & Carriage.

All of our Programme advertisers and stall holders.

All of the volunteers who help on the day.

THE COMMITTEE FOR THE 158th BYFLEET PARISH DAY

ESTHER WATSON GREEN	CHAIR
NICK BRADSHAW	SECRETARY & STALLS
MAUREEN NEVILLE	TREASURER
KATE LAVER	EVENTS CO-ORDINATOR
STEVE HOWE	ADVERTISING & LAYOUT
ANNE ADAMS	HORTICULTURE
DENISE PARRY	EVENTS CO-ORDINATOR
DEREK GRICE	SOUND CO-ORDINATOR
CAROL SIWICKA	WEBSITE CO-ORDINATOR
GRAHAME OSBORN	PROGRAMME EDITOR
DAVE COLWELL	CLASSIC VEHICLE
STEPHEN PHILPOT	EVENTS CO-ORDINATOR

PRS for Music

licences the use of copyright music across the UK, giving businesses and organisations the legal permission they need to play the music they want

These licences ensure that music publishers, songwriters and composers are fairly rewarded with royalties so they can keep making music – and mean we are able to support music at events like this.

For more information about PRS for Music or music licencing, visit www.prsformusic.com or call 0800 068 4828



The Blue Anchor



The Blue Anchor where a warm welcome awaits. We are based in Byfleet Village and offer a wide range of alcoholic and non-alcoholic drinks. Entertainment every Saturday evening. Quiz every other Tuesday and Bingo every Thursday. A function room is available for parties, Christenings and wakes.

Special weekly deals

'Wine Wednesday' £12 a bottle of wine.

'Fizz Friday' £15 a bottle of Prosecco.

- Large beer garden
- Children welcome
- Dog friendly
- Sky & TNT Sports shown
- Entertainment every weekend

155 High Road, Byfleet, KT14 7RL

01932 346301

blueanchortavern@outlook.com



DIRECT ELECTRIC

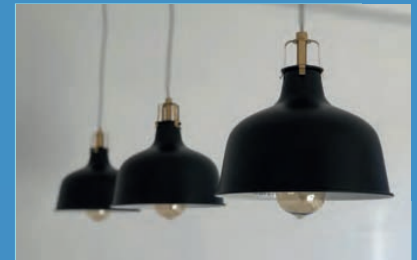
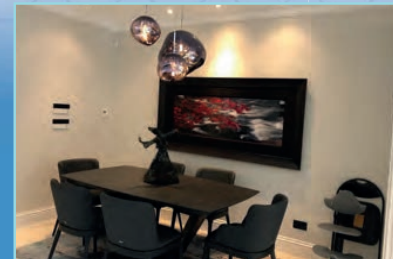
Fully qualified electrician
with over 10 years
experience within
Domestic, Commercial
and Industrial Settings.

For PROJECTS
LARGE or Small
We do them **ALL**

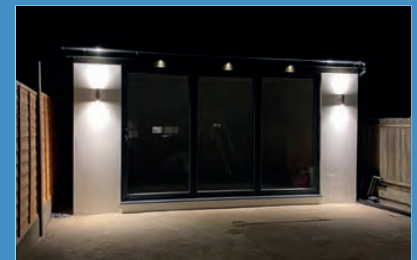
07869 822 058

07869 817 559

Directelectric@outlook.com



DIRECT ELECTRIC SOLUTIONS LTD Read my ★★★★★ Google reviews





Based in Send, Surrey, Hankley Financial Planning is passionate about providing a high-quality financial planning service.

The most common mistake we find individuals make in financial planning is not having a cohesive financial plan.

We pride ourselves in translating even the most technical jargon into simple terms to ensure you understand the decisions you are making.

We offer advice in a range of areas:



Contact Us

Send Business Centre,
3 Tannery House,
Tannery Lane,
Send,
Surrey,
GU23 7EF
01483 332 368

Info@Hankleyfp.com
www.hankleyfp.com

**Our family is here to move
your family in 2025**



**Please contact Robbie or Julie Withers for
a free valuation of your property**

01932 483284

info@wingateandwithers.co.uk

68 High Road, Byfleet, Surrey, KT14 7QL



**Local garage in the heart of Byfleet Village
catering for all your motoring needs**

Offering on site MOTs, servicing, diagnostics, tyres, air conditioning, brakes and suspension work all the way up to full engine and gearbox repairs.

We hold independent workshop status for the following brands: Mercedes Benz, BMW, Mini, Jaguar, Landrover, VW, Audi, Seat and Skoda, carrying main dealer diagnostic equipment and can provide the same main dealer online service updates. We also work on most other brands including hybrids and fully electric.

Why not give us a call on

01932 346499 / 01932 345666

160 High Road, Byfleet, Surrey KT14 7RG
Email: byfleetautocare@outlook.com

One Man's Junk

Antiques & Collectables
Vintage & Retro

11 High Road
01932 553451

Byfleet KT14 7QH
07770367938

onemansjunkbyfleet@gmail.com

Another Man's Treasure

- | | |
|-------------|-----------------|
| ★ Furniture | ★ Curios |
| ★ Toys | ★ Lighting |
| ★ Militaria | ★ Clocks |
| ★ Garden | ★ Architectural |

House clearance specialists

 One Man's Junk

 onemansjunkbyfleet



No job too big or small

25 years experience

Covering Surrey and surrounding areas

Our services:

- Roof tiling and slating
- Roof Replacements
- Flat roof repairs
- Chimney and lead works
- Fascia, soffit and gutters
- Gutter cleaning



Contact us

07894981162
info@roof-serv.co.uk

FREE QUOTES!

HORTICULTURAL PRIZE WINNERS 2024

THE MACLURE CUP FOR BEST ALLOTMENT IN WEST BYFLEET
 THE MACLURE CUP FOR BEST ALLOTMENT IN BYFLEET
 THE NICHOLS CUP – MOST POINTS IN DIVISION 1 (VEGETABLES)
 THE WAINE CUP – SECOND MOST POINTS IN DIVISION 1 (VEGETABLES)
 THE CLARKE CUP – BEST COLLECTION OF VEGETABLES IN DIVISION 1
 THE STRANKS SHIELD – BEST EXHIBIT IN CLASS 2 (SALAD CLASS)
 THE BARTON CUP – MOST POINTS IN DIVISION 2 (VEGETABLES)
 THE BYFLEET PARISH DAY CUP – BEST COLLECTION OF VEG IN DIVISION 2
 THE LADY EDWARDS CUP – MOST POINTS IN DIVISION 3 (FLOWERS)
 THE DOROTHY BOOKER ROSE BOWL – BEST EXHIBIT IN DIVISION 3
 THE MATCHAN ROSE BOWL – MOST POINTS IN DIVISION 5 (FLORAL ART)
 THE WENN ROSE BOWL – BEST EXHIBIT IN DIVISION 5 (FLORAL ART)
 THE GOLDEN JUBILEE TROPHY – BEST USE OF COLOUR IN FLORAL ART CLASSES
 THE WELBY CUP – MOST POINTS IN DIVISION 6 (FRUIT)
 THE MURPHY CUP – BEST EXHIBIT IN DIVISION 6 (FRUIT) EXCLUDING DISH
 THE DENNIS CLEAVER CHALLENGER SHIELD – FOR BEST DISH OF FRUIT
 THE JEFFERY MONTGOMERY JUNIOR CUP – CHILDREN'S CLASSES
 THE JEFFERY MONTGOMERY CUP – CHILDREN'S CLASSES
 THE MAUREEN WEBB-EVANS SALVER - AWARDED FOR BEST EXHIBIT IN DIVISION 7
 THE STRANKS FLOWER BOWL – (HANGING BASKET)
 THE MICK BATEMAN CHALLENGE CUP – BEST EXHIBIT IF DIVISION 10
 BANKSIAN MEDAL

JANET HODGES
 LEE, SARAH AND INDY DAVIES-RENZ
 JANET HODGES
 JIM ADAMS
 JANET HODGES
 JANET HODGES
 MARTIN CHRISITE
 Not awarded
 JANET HODGES
 ANNE ADAMS
 CAROL REAM
 SYLVIE MELLERSH
 ANNE MANSFIELD
 JANET HODGES
 JANET HODGES
 JANET HODGES
 MARTHA ROBINSON
 SOPHIE COOPER
 GENNY SLADE
 GERVAE MANDRELL
 HOWARD COOPER
 HOWARD COOPER

THE ALF SMITH CHALLENGE CUP
 (FOR BEST EXHIBIT IN SHOW JUDGED BY A LEADING MEMBER OF THE
 COMMUNITY 2024 – PRESENTED BY ELEANOR GRADY)

SYLVIE MELLERSH

GARDEN NEWS TOP TRAY
 GARDEN NEWS TOP VASE

1ST JANET HODGES
 1ST PETER CROZIER

2ND JOHN WHITE
 2ND ANNE ADAM

3RD JIM ADAMS
 3RD KATHY FRENCH



HOWARD COOPER



SOPHIE COOPER



ANNE MANSFIELD

PRIZES PRESENTED BY JOHN MCCABE FORMER RECTOR OF ST MARY'S CHURCH

HOME CRAFT AND HANDICRAFT CUPS AND AWARDS 2024

THE STRANKS SHIELD (HANDICRAFT)
 (FOR BEST EXHIBIT IN CLASSES 59F & 59G)
 BYFLEET PARISH DAY ART SHEILD
 BYFLEET PARSH DAY HOME CRAFT CUP
 BYFLEET PARISH DAY WOODCRAFT SHIELD
 BYFLEET PARISH DAY CAKE CUP
 THE HOLLIUP CUP
 (FOR BEST EXHIBIT IN CLASSES 59C, 59D & 59E)
 BYFLEET PARISH DAY HANDICRAFT CUP (HOWARD CUP)

JULIA WELCHMAN
 RICHARD EBORN
 ANNE ADAM
 RICHARD HACKNEY
 ANNE ADAM
 GILL PHILLPOT
 JANET TEMPLE

BYFLEET VILLAGE HALL

Why not visit the Village Hall and have a look at the groups that use it, or even book it for an event? Its history is available to view in the Byfleet Heritage Society room in Byfleet Library.

Not only do we have the main hall, but a large side room complete with kitchen and servery as well as a small meeting room.

Capacities are 220, 40 and 15 respectively and the main hall is fairly unique in having a sprung dance floor – popular with various dance formats including tea dances.

We can offer facilities for crafts, exercise classes, birthday parties, meetings and host events such as the Byfleet Players, Christmas Market, Christmas Carols and other community events.

For Hall bookings please contact the Hall Manager, contact details below.

At a public meeting in 1897 local benefactor Mr F C Stoop offered to build a Village Hall, and the land was donated by Mr H F Locke King of Brooklands fame. The hall was officially opened in December 1898. Used by a variety of groups and organisations over the years including during the Second World War when it acted as a British Restaurant where basic meals were provided at low cost.

The trustees of Byfleet village Hall were saddened last year by the death of our colleague and Chairman, Kim Richardson. He worked tirelessly for the hall and will be sorely missed.



The frontage is maintained by the Byfleet Horticultural Society who also arrange the Parish Day display and prizes for locally grown produce from garden and allotments.



The main Hall looking at the stage.



Byfleet Heritage Society Blue Plaque. Frederick & Agnes Stoop.

Kim Sullivan - Hall Manager
Tel: 01932 336236

info@ByfleetVillageHall.org
Mob: 07436 790899

JSTA

JULIE STANNETT THEATRE ARTS

Ballet : Tap : Modern : Jazz : Musical Theatre : Drama

Fun and dance for boys and girls from 2½ years

JSTA has been family run for over 40 years and has taught thousands of local children to the highest standards

"Truly inspirational"

"a wonderful school"

"...my only regret is I didn't come to JSTA earlier"

20% Off First Term's Fees with Code: FUN25

BYFLEET BOWLS CLUB



CLUB HOUSE OPEN ON PARISH DAY

Teas, coffees & cakes for sale throughout the day

We will also be providing the opportunity for you to have a go at bowls

(W.C. facilities available)

CLUB NIGHTS EVERY TUESDAY AT 6PM

Everyone is welcome to come and give bowls a try

All equipment provided but please wear flat soled shoes

Stream Close, Byfleet KT14 7LZ
www.byfleetbowlsclub.co.uk



Byfleet United Charity

Supporting residents in need and community organisations in
Byfleet & West Byfleet

We can provide white goods, furniture, clothing, school uniforms, and everyday items you may need.

We help families and individuals who find themselves in temporary financial difficulty or struggle with costs of raising a family.

We give community grants to local schools, organisations, clubs and projects.

We have 24 modern Almshouse apartments for the over 55s in the heart of West Byfleet.

For further information call: 01932 340532 or visit:

www.byleetunitedcharity.org.uk



CONSISTENTLY RAISING STANDARDS

- Recycled Aggregates
- Primary Aggregates
- Ready Mix Concrete

- Grab Hire
- Skip Hire
- Plant Hire

- Muck Away
- Rail Freight
- Demolition

- Deep Drainage
- Sewer Connections
- Directional Drilling

T 020 8947 4000 W cappagh.co.uk



manager@kingspreschoolbyfleet.co.uk 01932 345979 01932 349491 www.kingspreschoolbyfleet.co.uk

About us

King's Pre-School is a learning environment that allows every child to thrive. We are based in the heart of Byfleet and currently have two classrooms across two sites.

We are a family run setting with staff who offer a fun yet professional approach to help both you and your child through the Early Years of their learning development.

We pride ourselves in being a close-knit team which helps lead our setting to feel like a home from home. We accept all types of government funding in our sessions.

EXCITING NEWS!

From Jan 2026 we will be accepting children from 9 months old! We will be extending our hours to 7:30-18:00!



WHAT OUR PARENTS HAVE TO SAY:

"Both of my children have absolutely thrived at Kings. We are really pleased with their development and progress and what they have achieved at nursery. The engaging activities and knowledgeable staff ensure that the children find learning fun. Both of our children have strong, positive relationships with all the nursery staff which has allowed them to settle in to nursery life quickly. I am so glad that I chose Kings Nursery."

"Kings Pre-School have cared for both my sons with expertise but also a lot of care and compassion. Could not recommend them more"

"Highly recommend King's Pre-School, both my children have been here. They are very caring, and work on school readiness."

"This is my 3rd child to come to kings I wouldn't go anywhere else! The girls are one of a kind"

"My Daughters had the best time throughout their days at King's Pre-School. Staff were amazing and supportive, they knew my girls really well and ensured they were well prepared for the transition to 'big school'!"

"All three of our children have attended, and each experience has been wonderful. The staff are caring, attentive, and always create a warm, nurturing environment for the little ones. We've seen our kids thrive in their care, and it's clear that they are well-looked after while learning and developing new skills. Highly recommend to any parent looking for a reliable and caring nursery"

Enquire now for 2025-26 enrolment!

Email us to book a show around: manager@kingspreschoolbyfleet.co.uk

The confusing names of Railway Stations near Byfleet

What's in a Name? In this case the names of our three local railway stations, Weybridge, Byfleet and New Haw and of course West Byfleet. Most of you will recognise these names and will be familiar with their locations but their history is not as simple as you might expect.

Firstly, the only one of these stations which bears the original name today is **WEYBRIDGE** opened 187 years ago in 1838 by the London and Southampton Railway Company. Ten years later the line from Weybridge to Chertsey was opened and a junction with the main line, using a spur to the Weybridge to Chertsey line, was made to the west of Weybridge with its own signal box. Due to the close proximity to Byfleet village, it was named Byfleet Junction but no station was built there at this time. Neither was there a station anywhere near what we know as West Byfleet today. So there were no stations between Weybridge and Woking.

The Station we know as West Byfleet today.

The residents of this hamlet had to wait a further 49 years before the London and South Western Railway (ex. London and Southampton Railway) decided that there was sufficient potential passenger and goods traffic to warrant the investment to build a new station there. This new station was named **BYFLEET and WOODHAM** and opened in December 1887. The Surrey Advertiser and County Times newspaper for 3rd December 1887 stated that:

'The station will doubtless be a great convenience to the inhabitants of Byfleet, Woodham, Ottershaw, Pyrford, Wisley and Ripley'

The station and goods yards were controlled from a two story high wooden signal box at the Woking end of the London (UP) platform (this survived until 1970). During 1901 and 1902 the number of tracks from London was increased to four necessitating the change of the town side platform to be an island platform, as it is today and the station received leading edge Acetylene lighting.

In 1913 the powers that be removed Woodham from the name and it became plain '**BYFLEET**' followed some 37 years later in 1950 by the further change to it's current designation of '**WEST BYFLEET**'.



West Byfleet station in 1962

(continued overleaf)

The Station we know as Byfleet and New Haw today.

To understand the reasons for this station ever existing, we need to go back to 1909, five years before the First World War started and two years after the opening of the Brooklands Racing Circuit. By 1909 the early aviators began to arrive and very soon there was an established community of flyers (where Tesco is today) developing their primitive aircraft and offering flying lessons to fund their activities. A.V. Roe had attempted to use the Finishing Straight for his early flight trials in 1908 but was thrown out by the then Clerk of the Course, Baron Ernst de Rodakowsky. Vickers Ltd., Aviation Dept, were manufacturing aircraft at Erith in Kent in 1911 but soon became aware of the aerial activities at Brooklands and decided to have a presence on site opening their own flying school in 1912. This was very successful and numerous aircraft types were produced up to 1914 when their flying school was, along with several others taken over by the Royal Flying Corps as a training school. With the outbreak of war they moved their manufacturing to Brooklands taking over the old Itala Car Works, which became available in 1915. (Of interest but not relevant to the station names, when the factory finally closed there was still a Conference Room on the gallery above the Machine Shop called 'The Itala Conference Room', a long lasting link to the origins of the factory.) The Itala Works lay between Brooklands Road and the racing track where the fork allowing access to the finishing straight was positioned. Once the new factory was opened and aircraft manufacture started in earnest, the workforce grew very quickly, which had the effect of doubling the population of Byfleet during the next ten years



Down stopping train passing West Weybridge station in 1953



By the end of the First World War in 1918 Vickers had constructed 4,500 aircraft in addition to those constructed by other aircraft companies on site such as Sopwith Aviation. As you may know many new houses were built in Byfleet to house workers at Brooklands during the 1920s and 1930s. In 1927 the Southern Railway (the amalgamation of the London and Southwestern Railway, the South Eastern and Chatham Railway and the London Brighton and South Coast Railway) opened a new station on 10th July 1927 to serve the needs of Brooklands and Byfleet but they named it **WEST WEYBRIDGE** even though it was very close to the original signal box named Byfleet Junction. Presumably because at this time there was already a station named Byfleet serving West Byfleet. This name continued for the next 35 years until it was renamed to **BYFLEET AND NEW HAW** in June 1962.

So I hope you have found this little article of interest and next time you catch a train you may think of the names of yesteryear.

Dave Colwell



West Byfleet Station (then Byfleet) c 1910



Byfleet and New Haw (West Weybridge) Ticket office c 1960's



We welcome back this year Surrey Hills Carriages, they will be leading the parade carrying the Mayor of Woking and our 'Royal Family' to Parish Day. Kindly sponsored by Byfleet, West Byfleet and Pyrford Residents Association

A warm welcome for the first time at Parish Day to Misselchalke Gun Dogs, look out for their 2 displays in the main arena.



AMONG THE ATTRACTIONS AT PARISH DAY THIS YEAR



BEN'S PUNCH & JUDY



THE SURREY PIPE BAND



MATTO THE CLOWN



GOLDSWORTH GERRY



THE WEST BYFLEET SHOWCHOIR



VISIT

PAINSHILL

WHERE THE WALK IS A WORK OF ART

Discover a living canvas with beautiful views, dramatically placed buildings and a Crystal Grotto



 PAINSHILL

Cobham, Surrey
www.painshill.co.uk